

### 1<sup>st</sup> Session

Thurs 14<sup>th</sup> September 2023  
to  
Thurs 7<sup>th</sup> December 2023

Closed for Mid-term - Thurs 2<sup>nd</sup> November 2023

Christmas & New Year Closed  
14<sup>th</sup>, 21<sup>st</sup>, 28<sup>th</sup> Dec 2023 & 4<sup>th</sup> Jan 2024

### 2<sup>nd</sup> Session

Thurs 11<sup>th</sup> January 2024  
to  
Thurs 21<sup>st</sup> March 2024

Closed for Mid-term - Thurs 15<sup>th</sup> February 2024

Easter Closed  
28<sup>th</sup> March 2024 & 4<sup>th</sup> April 2024

### 3<sup>rd</sup> Session

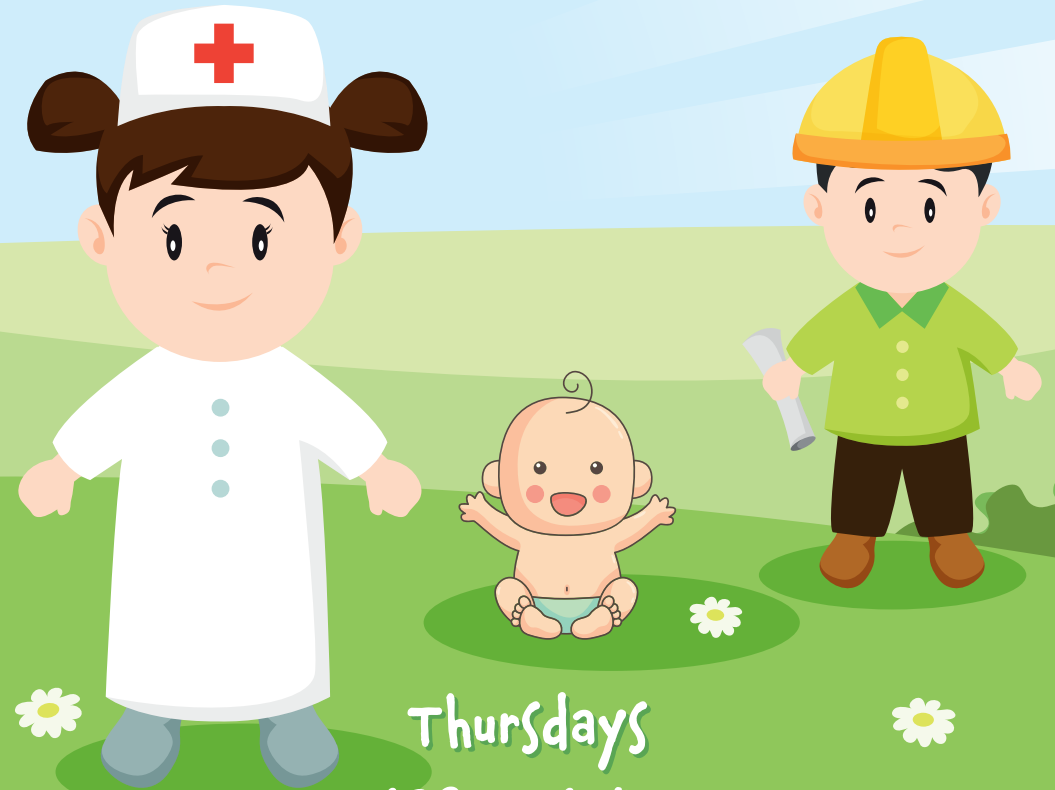
Thurs 11<sup>th</sup> April 2024  
to  
Thurs 30<sup>th</sup> May 2024

*Should there be any changes to the above, prior notification will be given.*

IRIS SMYTH - 07745 553 059

# Welcome

to Larne Mission Hall  
Parents, Toddlers & Friends Group



Thursdays  
10am - 12pm  
(Voluntary Contribution £2)

We are really pleased you've joined the Larne Mission Hall Parent & Toddler group.

EACH Thursday the hall will be transformed into different areas with enough space for older children to zoom around in cars and other ride-on toys. There is also a kitchen, a book table, a jig saw table & slide.

Time is set aside for refreshments, sometimes including fresh scones. If it is your child's birthday please let us know and we would be glad to sing Happy Birthday.

Toys are tidied away while the session concludes.



### **The Group Aims Are:**

To make provision for an informal, relaxed & safe Christian venue for child-carers and their children

To provide an environment for parents and carers to learn from each other and receive support & encouragement

To offer toddlers a mildly arranged play group

It is important that every member of the group feels relaxed, supported, safe & secure - for that reason we would appreciate your co-operation in the following:

Your child's safety & behaviour are your responsibility.

If disagreements arise among children you are responsible to sort these out sympathetically.

Please leave your prams, buggies or other large items in the room on the left-hand side as you come into the foyer.

**NO children in the kitchen AT ANY TIME.**

The timetable is set out alongside school holidays and we would ask that you do not bring Primary School age children.

We do value your comments and if you have any concerns or suggestions these would be welcome.

***Above all - have fun & enjoy being together!***